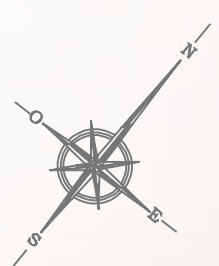
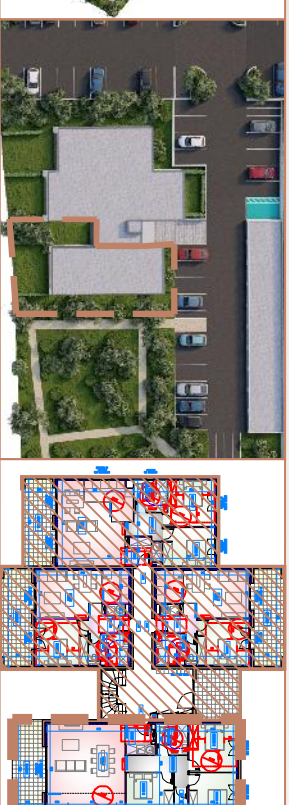


# Résidence "PARC DE SAINTE LUCIE"

COMMUNE DE BORGGO

BATIMENT D - LOT 37 - REZ DE CHAUSSEE - TYPE 4



**TABLEAU DES SURFACES**  
**BATIMENT D - LOT 37 - T4 - RdC**

ENTREE	4.43m²
PIECE A VIVRE	38.04m²
CHAMBRE 1	10.76m²
CHAMBRE 2	10.77m²
CHAMBRE 3	12.24m²
WC	1.51m²
DEGAGEMENT	6.60m²
SALLE DEAU	5.09m²
TOTAL	89.44m²
TERRASSE	16.12m²
JARDIN PRIVATIF	env. 140.00m²

LOT 37

