

# "LES VILLAS DE BORGO"

COMMUNE DE BORGO

VILLA 06 - LOT 06 - TYPE 4 DUPLEX

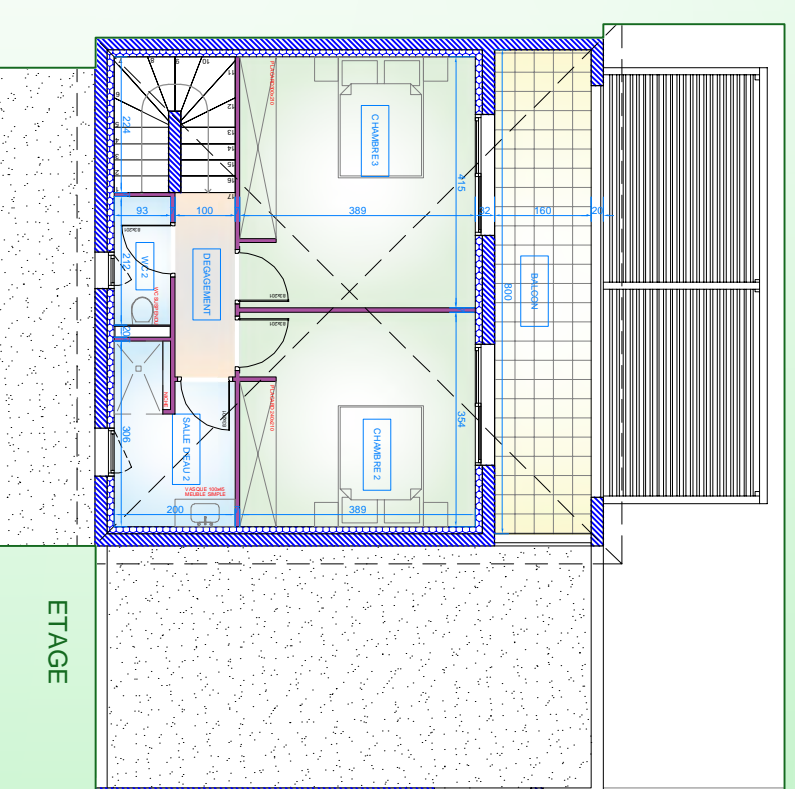


*Les Villas de*  
DE BORGO

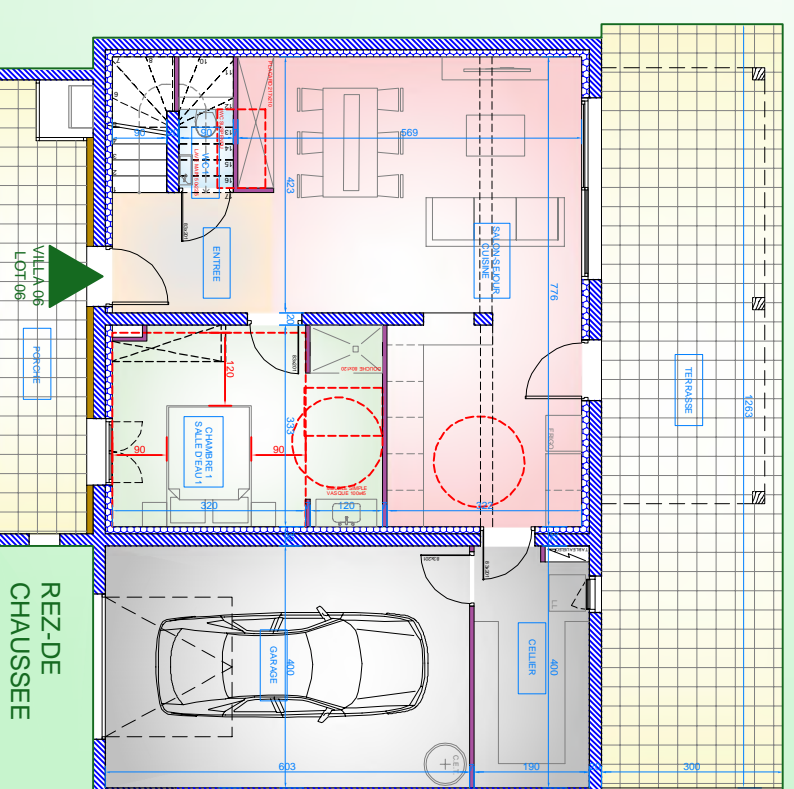


TABLEAU DES SURFACES  
VILLA 06 - LOT 06 - T4 - DUPLEX

REZ-DE CHAUSSEE	
ENTREE	5,31m <sup>2</sup>
PIECE A VIVRE	34,08m <sup>2</sup>
CHAMBRE 1 - SALLE D'EAU 1	14,64m <sup>2</sup>
WC 1	1,17m <sup>2</sup>
ETAGE	
CHAMBRE 2	13,80m <sup>2</sup>
CHAMBRE 3	16,12m <sup>2</sup>
DEGAGEMENT	3,05m <sup>2</sup>
SALLE D'EAU 2	5,41m <sup>2</sup>
WC 2	1,97m <sup>2</sup>
TOTAL	95,55m <sup>2</sup>
GARAGE	24,11m <sup>2</sup>
CELLIER	7,60m <sup>2</sup>
BALCON	12,80m <sup>2</sup>
TERRASSE	37,76m <sup>2</sup>
PORCHE	10,41m <sup>2</sup>
JARDIN PRIVATIF	env. 60,00m <sup>2</sup>



ETAGE



REZ-DE CHAUSSEE